

Importance of Experiential Education Opportunities for Adult Learners



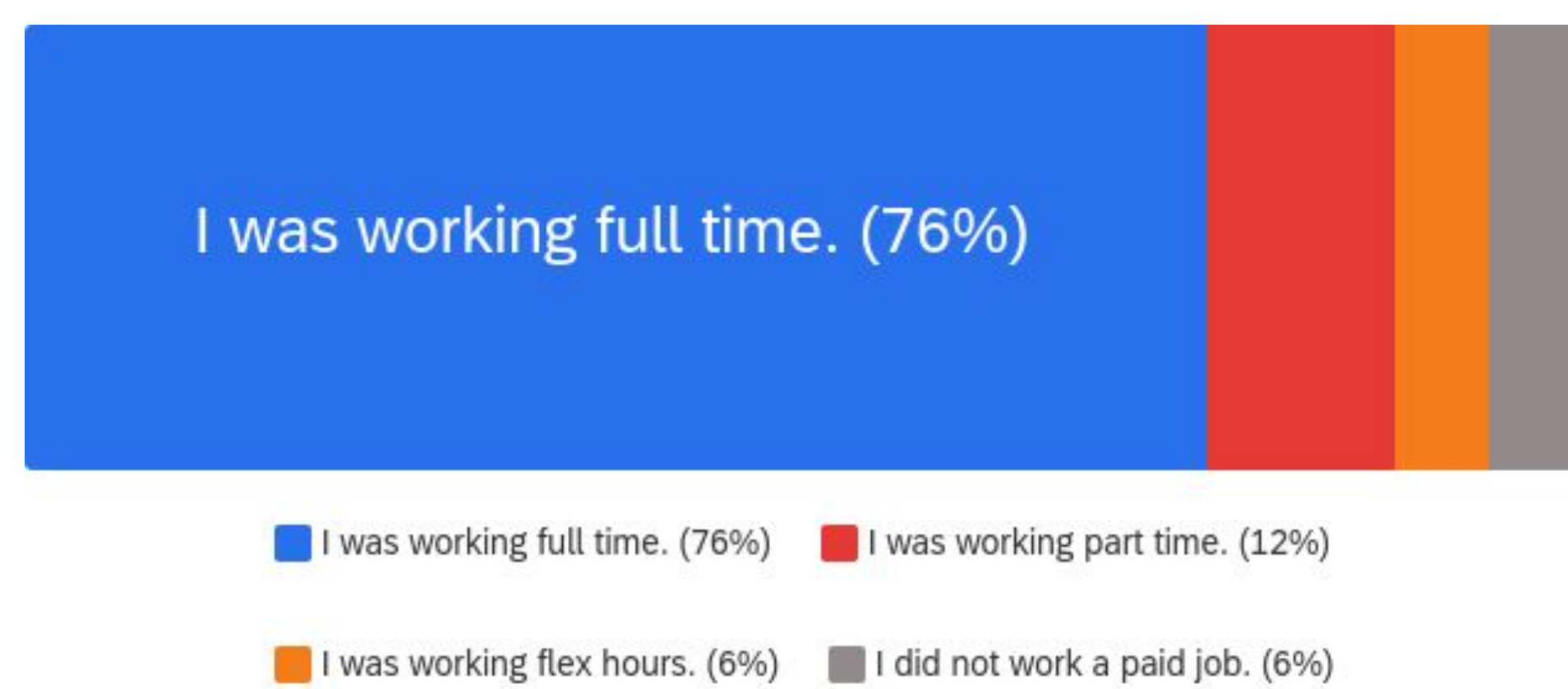
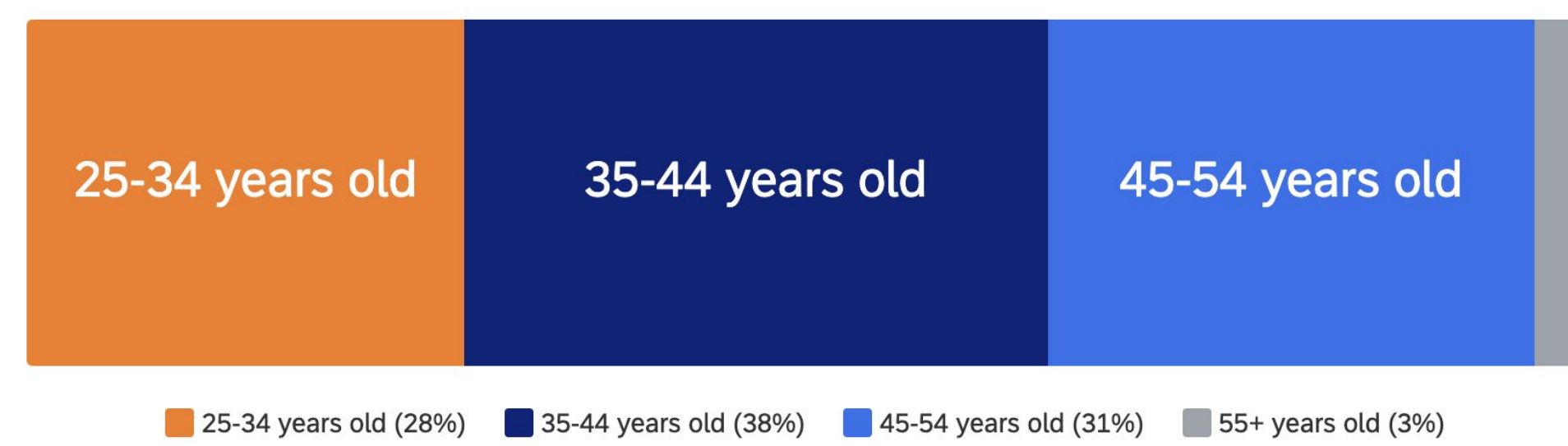
PRESENTER: **Jamie Hudson**
Interdisciplinary Professional Studies

BACKGROUND: Despite knowing the benefits of experiential education, university systems do not support equitable access for adult learners.

METHODS

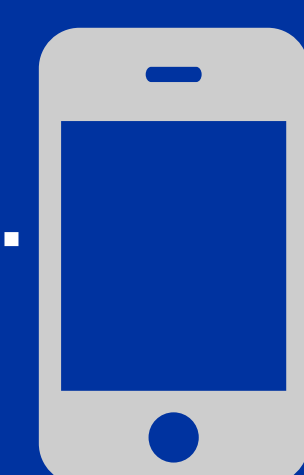
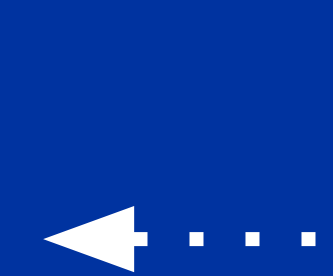
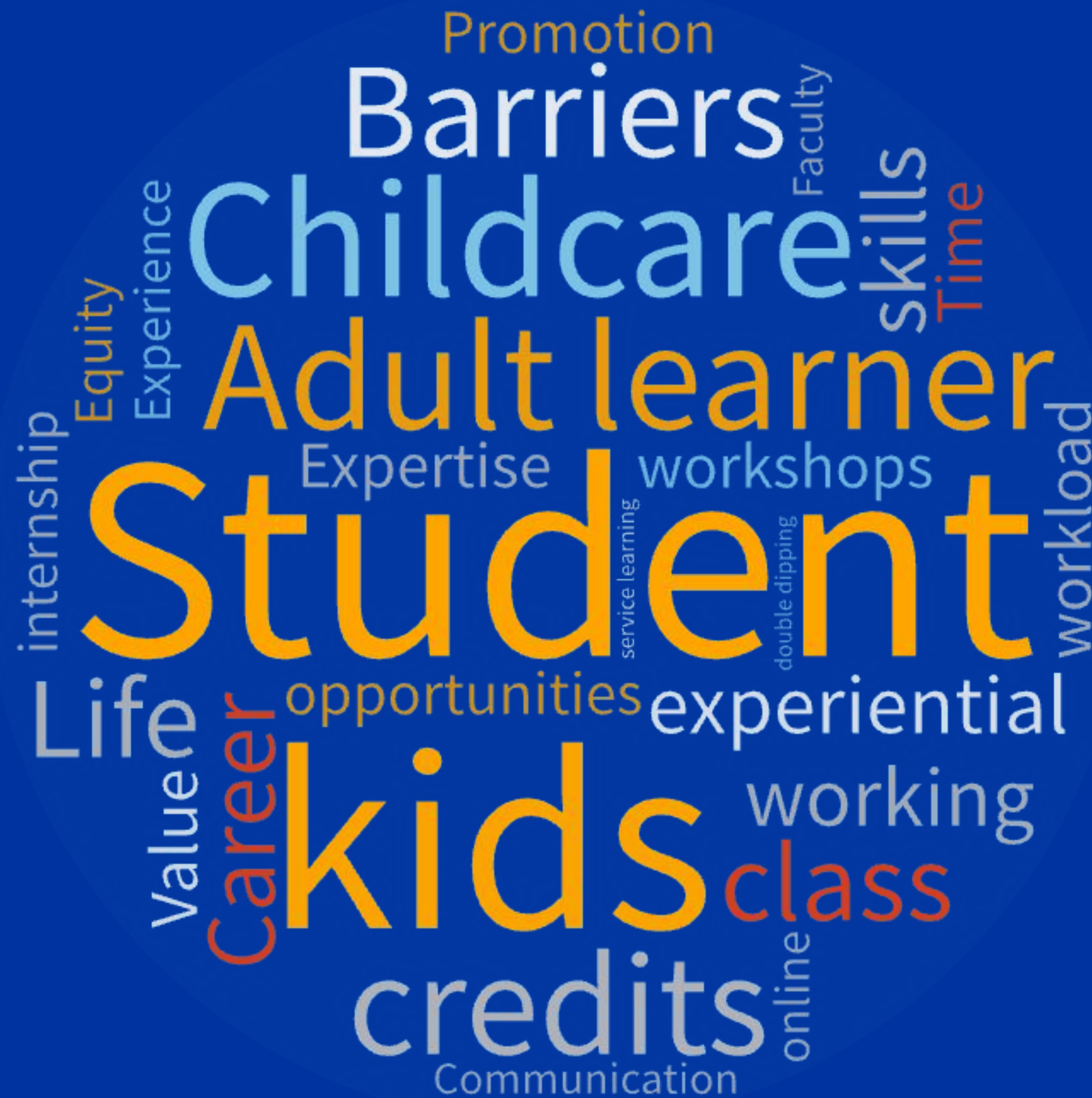
1. Surveyed adult learners (n=32) and faculty (n=6)
2. Interviewed adult learners (n=6) and faculty (n=3)

ADULT LEARNER RESULTS



100%
of participants said experiential learning is valuable for work & college career goals

Adult learners face barriers in accessing experiential education due to work & family obligations and misunderstandings about availability & access



Scan to access the paper and additional research information

FACULTY IDENTIFIED BARRIERS

Time – no space in workload or bandwidth to provide experiential learning opportunities

Lack of University support – no reward or tangible recognition for mentoring student experiential education opportunities

Communication – opportunities often don't explain ways students can participate

RECOMMENDATIONS FOR WRITING STUDIES based on preliminary data

Clearly communicate availability of experiential education opportunities – **60%** of students didn't know these options existed.

Detail who these opportunities are for – online students may not know they qualify to participate.

Options must be equitable –

- **90%** of adult learners believed options could be made more accessible
- **80%** of adult learners wished for more flexible options
- **48%** of adult learners couldn't participate due to work schedule conflicts
- **40%** of adult learners couldn't participate due to family & personal life schedules

Provide options during evenings and weekends when non-traditional students have more availability.

Universities need to support writing studies faculty who mentor students in experiential learning by providing bandwidth in their schedules and financial recognition for this important work.

Research funded by Undergraduate Research & Creative Activity Grant

Faculty Advisor

Dr. Jenn Mallette, Dept of Writing Studies



BOISE STATE UNIVERSITY